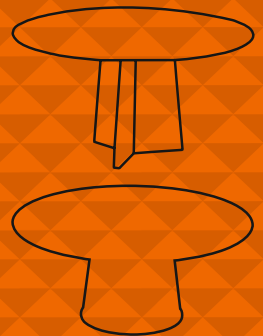




DRAENERT



MONTAGE ASSEMBLY

1515-II / 1515-III TADAO

ASSEMBLY

1515-II / 1515-III TADAO

CONTENT OF DELIVERY

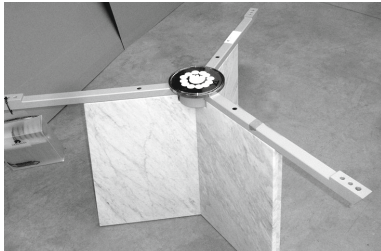
(remains with the customer)

- 1 base
- 1 inner table top
- 1 outer table top ring
- 2 plastic guides
- 1 compression spring
- 77 precision balls
- 3 cylinder head screws
- grease
- material information
- care product



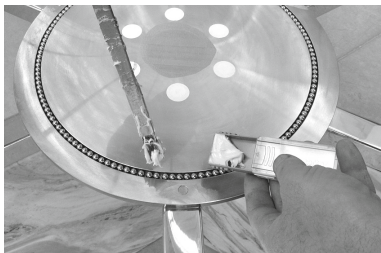
ASSEMBLY VIDEO
1515-II

PERSONS REQUIRED FOR ASSEMBLY: 3 PERSONS

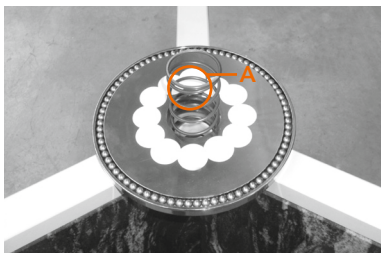


- 1 |** Unpack all items carefully and put the base to its final place.

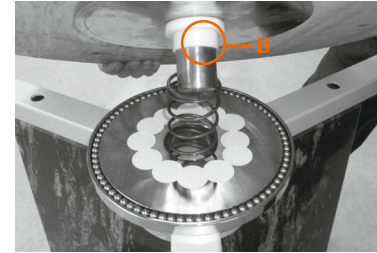
ATTENTION: Do not lift the base on the arms, only lift it on the stone wings of the pedestal.



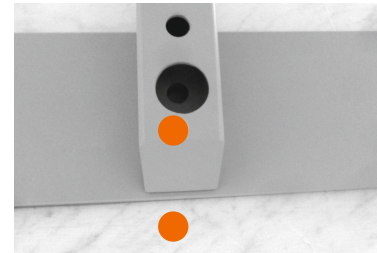
- 2 |** Place all precision balls into the groove of the turned center part and apply slightly some grease on the balls.



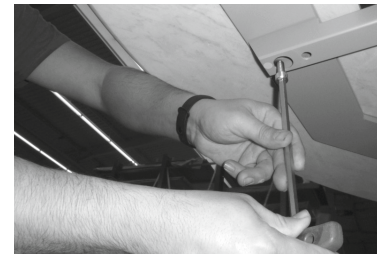
Put one of the both plastic guides with thicker socket ahead into the central hole and insert the **COMPRESSION SPRING (A)**.



- 3 | NOTE** The table has been pre-adjusted in the factory and marked with colored marking points on the table tops and on the base. Push the second plastic guide over the **ROD (B)** of the central metal disc of the inner table top. Lift the inner table top carefully and evenly and insert the bolt through the compression spring into the cylinder resp. into the bushing of the pedestal.



- 4 |** Every precaution must be taken in the next step, that the outer table ring will not collide with the inner table top (there is only a gap of 1 mm)! Lift the outer table top ring carefully and place it according the colored markings on the pedestal, that borings in the glued frame are aligned with the borings in the support arms.



- 5 |** Screw-in the 3 cylinder head screws from below into the outer borings of the arms and fasten them. Hand-tight is quite sufficient.

NOTE Take care for the free movement of the inner rotating table top.

Now the table is ready assembled.

OPERATION

The inner table top can be rotated by 360°.

PFLEGE

Die Auszugsmechanik ist wartungsfrei. Zur Pflege der jeweiligen Plattenart beachten Sie bitte die entsprechende Materialinformation.

STANDORTWECHSEL

Beim Standortwechsel des Tisches müssen die Tischplatten demontiert werden. Bei Steinplatten besteht sonst die Gefahr des Plattenbruches.

Daher nur demontiert transportieren.

UMZUG

Beim Umzug des Tisches müssen die Tischplatten demontiert, gut verpackt und separat aufrecht stehend transportiert werden.

CARE

The table is maintenance-free. For the care of the different stone types please see the according material information.

INSTRUCTIONS FOR MOVING THE TABLE

Move the table only disassembled.

REMOVAL

For a removal of the table, the table tops must be disassembled and transported well protected and packed. The table tops must be transported separately and in the upright position.

DRAENERT GMBH

STEIGWIESEN 3

88090 IMMENSTAAD / BODENSEE

GERMANY

FON +49 (0) 7545 - 2080

info@draenert.de

www.draenert.de

FOLLOW US

